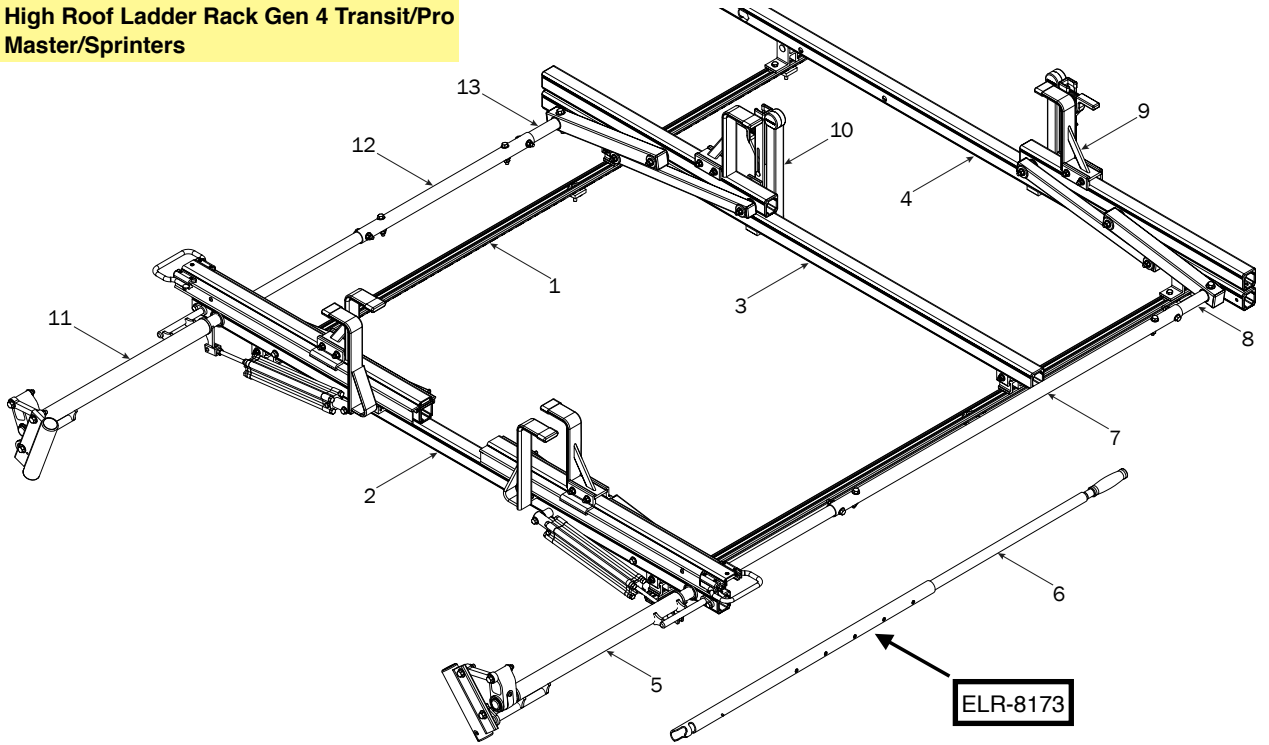
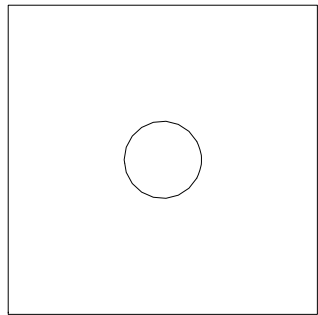


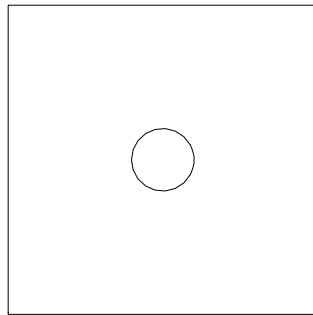
High Roof Ladder Rack Gen 4 Transit/Pro Master/Sprinters



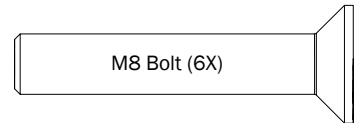
1—FBM3-0003 (Qty 1)
Channels with hardware



M8 Spacer (6X)

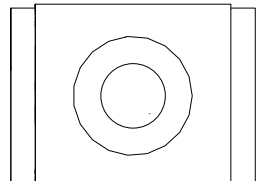


Foam Gasket (6X)



M8 Bolt (6X)

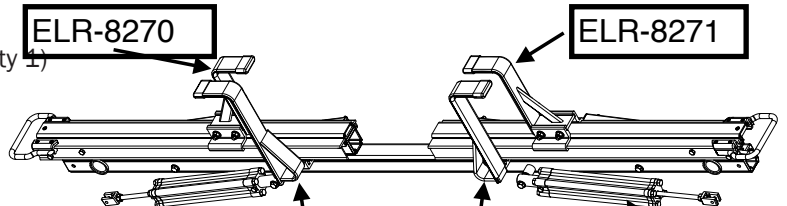
End Caps (4X)



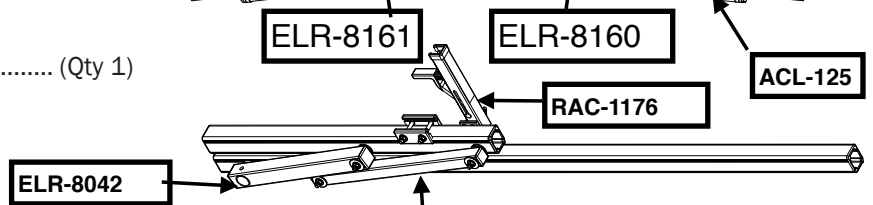
Connect Plate (6X)

Brackets (6X)

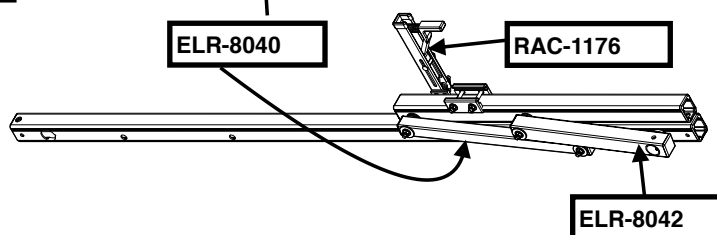
2—Rear Crossbar Assembly (Qty 1)



3—Center Crossbar Assembly (Qty 1)

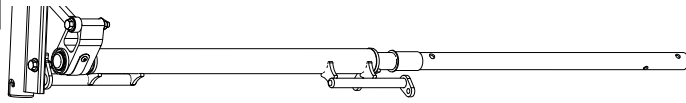


4—Front Crossbar Assembly (Qty 1)

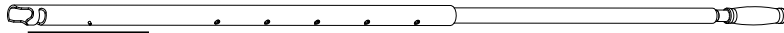


Right Hand, A Version, 50.00"

ELR-8092



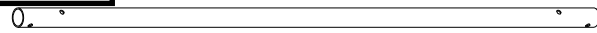
6—HHR Handle Assembly (Qty 1)
35.00"



ELR-8173

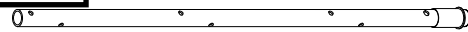
7—Connecting Bar (Qty 1)
4.00'

ELR-1204



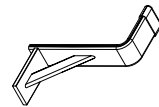
8—Front Drive Shaft (Qty 1)
B Version, 35.75"

RTK-7813



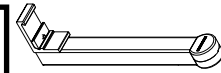
9—Z Post (Qty 2)
Adjustable, 7.25"

ELR-8082

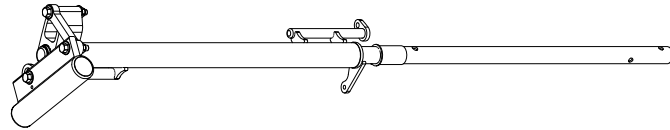


10—L Post (Qty 2)
Roller Cap, 9.25"

ELR-8069 BTM
Mount



11—Rear Drive Shaft (Qty 1)
Left Hand, A Version, 50.00"



12—Connecting Bar (Qty 1)
24.00"

ELR-8202



13—Front Drive Shaft (Qty 1)
B Version, 11.75"

ELR-8064



HKT-8163-Rotation Hardware Kit

